



Monthly summary report

Hospital-Based Human Influenza Surveillance in Bangladesh

May 2026

Hospital based influenza surveillance
Monthly hospital-wise influenza lab results
May 2026

Hospital	District	Sample	Flu	Flu %	Flu A	Flu B	Flu A+B	Flu A/H1	Flu A/H3	Flu A/H5	Flu A/ (H1N1)pdm09	Flu B Yamagata	Flu B Victoria
CuMCH	Cumilla	108	16	15	16	0	0	0	16	0	0	0	0
JGH	Jashore	91	37	41	37	0	0	0	37	0	0	0	0
JRRMCH	Sylhet	103	30	29	30	0	0	0	30	0	0	0	0
CMCH	Chattogram	121	21	17	21	0	0	0	21	0	0	0	0
DJMCH	Dinajpur	95	37	39	37	0	0	0	37	0	0	0	0
KGH	Dhaka	87	18	21	18	0	0	0	18	0	0	0	0
		605	159	26	159	0	0	0	159	0	0	0	0

Hospital based influenza surveillance
Monthly enrollment by different wards (Medicine, Pediatrics and CCU)
May 2026

Hospital	District	Medicine ward			Pediatrics ward (≤12 years of age)			Coronary Care Unit (CCU)		
		Sample	Flu	Flu %	Sample	Flu	Flu %	Sample	Flu	Flu %
CuMCH	Cumilla	58	9	16	46	7	15	4	0	0
JGH	Jashore	47	20	43	44	17	39	0	0	0
JRRMCH	Sylhet	59	11	19	42	18	43	2	1	50
CMCH	Chattogram	66	7	11	55	14	25	0	0	0
DjMCH	Dinajpur	46	13	28	49	24	49	0	0	0
KGH	Dhaka	49	10	20	38	8	21	0	0	0
		325	70	22	274	88	32	6	1	17

Hospital based influenza surveillance
Monthly enrollment by different surveillance groups
May 2026

Hospital	District	SARI (aged ≥ 5 years)			SARI (aged < 5 years)			ILI		
		Sample	Flu	Flu %	Sample	Flu	Flu %	Sample	Flu	Flu %
CuMCH	Cumilla	35	2	6	25	4	16	48	10	21
JGH	Jashore	27	12	44	21	8	38	43	17	40
JRRMCH	Sylhet	34	8	24	24	9	38	45	13	29
CMCH	Chattogram	41	5	12	32	7	22	48	9	19
DjMCH	Dinajpur	30	13	43	20	8	40	45	16	36
KGH	Dhaka	21	2	10	19	3	16	47	13	28
		188	42	22	141	39	28	276	78	28

Hospital based influenza surveillance
Influenza results by different age groups
May 2026

Age groups	May 2026									Initiation—May 2026								
	SARI (aged ≥ 5 years)			ILI			SARI (aged < 5 years)			SARI (aged ≥ 5 years)			ILI			SARI (aged < 5 years)		
	Sample	Flu	Flu %	Sample	Flu	Flu %	Sample	Flu	Flu %	Sample	Flu	Flu %	Sample	Flu	Flu %	Sample	Flu	Flu %
<1 Year	-	-	-	18	6	33	68	11	16	-	-	-	3,145	226	7	13,280	905	7
1-4 Years	-	-	-	40	12	30	73	28	38	-	-	-	5,710	875	15	6,760	1209	18
5-14 Years	52	19	37	37	16	43	-	-	-	6,600	1499	23	4,029	925	23	-	-	-
15-24 Years	42	7	17	80	22	28	-	-	-	6,339	1478	23	4,463	881	20	-	-	-
25-39 Years	39	5	13	63	13	21	-	-	-	6,611	1311	20	3,564	593	17	-	-	-
40-59 Years	32	5	16	28	9	32	-	-	-	8,243	1345	16	2,397	332	14	-	-	-
≥ 60 Years	23	6	26	10	0	0	-	-	-	8,299	1292	16	801	82	10	-	-	-
	188	42	22	276	78	28	141	39	28	36,092	6,925	19	24,109	3,914	16	20,040	2,114	11

Hospital based influenza surveillance
Hospital-wise influenza lab results
Surveillance initiation—May 2026

Hospital	District	Initiation	Sample	Flu	Flu %	Flu A ^ψ	Flu B ^λ	Flu A+B ^τ	Flu A/H1	Flu A/H3	Flu A/H5	Flu A/H7	Flu A/ (H1N1)pdm09	Flu B Yamagata	Flu B Victoria
DNMCH ^γ	Dhaka	Jun 2007	2,061	312	15	201	111	0	15	84	0	0	102	13	7
CBMCH ^γ	Mymensingh	Oct 2007	2,053	302	15	206	96	0	7	107	1	0	91	16	10
JIMCH [‡]	Kishoregonj	Sep 2007	10,054	1,870	19	1230	639	1	9	714	0	0	505	64	405
RMCH [‡]	Rajshahi	May 2007	6,124	691	11	476	215	0	14	298	0	0	162	39	115
SZRMCH ^γ	Bogura	Sep 2007	3,865	653	17	439	213	1	12	256	0	0	170	29	39
LAMB [†]	Dinajpur	Oct 2007	1,171	112	10	72	40	0	7	41	0	0	24	1	0
BBMH [†]	Chattogram	Aug 2007	1,440	157	11	118	39	0	13	42	0	0	63	3	0
CuMCH [‡]	Cumilla	Oct 2007	8,351	1171	14	819	349	3	9	526	1	0	282	28	171
KMCH [‡]	Khulna	Jul 2007	5,141	760	15	543	215	2	16	300	0	0	222	17	137
JGH ^{γ†}	Jashore	Sep 2007	8,263	1807	22	1237	565	5	10	757	2	0	467	26	401
JRRMCH	Sylhet	Jul 2007	8,258	1440	17	982	455	3	16	606	2	0	356	34	278
SBMCH [‡]	Barishal	Aug 2007	8,873	1296	15	854	438	4	7	454	0	0	389	56	233
CMCH	Chattogram	Apr 2014	8,375	1365	16	986	375	4	0	573	1	0	410	41	314
DjMCH	Dinajpur	Apr 2014	5,759	924	16	645	278	1	0	405	0	0	237	28	229
KGH [‡]	Dhaka	Nov 2025	453	93	21	93	0	0	0	93	0	0	0	0	0
			80,241	12,953	16	8,901	4,028	24	135	5,256	7	0	3,480	395	2,339

^λ Influenza B lineages initiated in January 2016

^ψ rRT-PCR result of four samples were equivocal positive for Influenza A.

^ψ Three samples were co-infected with both A(H3) and A(H1N1)pdm09.

^λ Three samples were co-infected with both Influenza B (Yamagata lineage) and Influenza B (Victoria lineage), another ten samples were unsubtypeable.

^τ Three samples were co-infected with both Influenza A(H1N1)pdm09 and Influenza B (Victoria lineage).

[†] Nine samples were co-infected with both Influenza A(H3) and Influenza B (Victoria lineage).

[†] Surveillance activities ended at LAMB (Dinajpur) and BBMH (Chittagong) in May 2016.

Outpatient ILI surveillance discontinued in October 2017.

^γ Surveillance activities ended at DNMCH (Dhaka), CBMCH (Mymensingh), SZRMCH (Bogra) and JGH (Jessore) in October 2017.

[‡] Surveillance activities reinitiated at Cumilla Medical College Hospital (CuMCH), Cumilla in January 2018.

[‡] Surveillance activities reinitiated at Jashore 250 bed General Hospital (JGH), Jashore in December 2018.

Note: Surveillance activities extended to the intensive care units (ICU) and coronary care unit (CCU) of the participating hospitals in January 2018.

^φ Intensive care units (ICU) surveillance discontinued in January 2019.

Outpatient ILI surveillance reinitiated at JRRMCH (Sylhet), CMCH (Chattogram) and DjMCH (Dinajpur) in November 2022.

Outpatient ILI surveillance reinitiated at JIMCH (Kishoregonj) and JGH (Jashore) in December 2022.

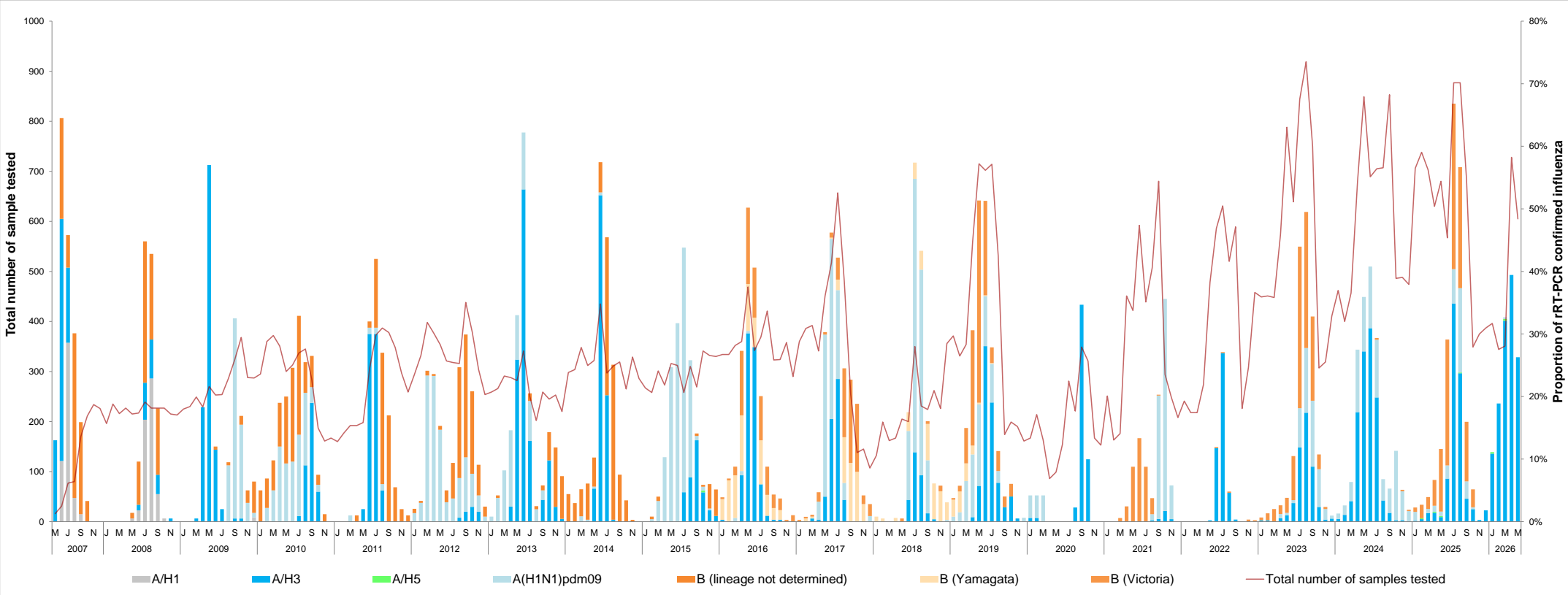
[‡] Surveillance activities ended at JIMCH (Kishoregonj), RMCH (Rajshahi), KMCH (Khulna) and SBMCH (Barishal) in October 2025.

[‡] Surveillance activities initiated at Kurmitola General Hospital (KGH), Dhaka in November 2025.

Hospital based influenza surveillance

Influenza seasonality graph

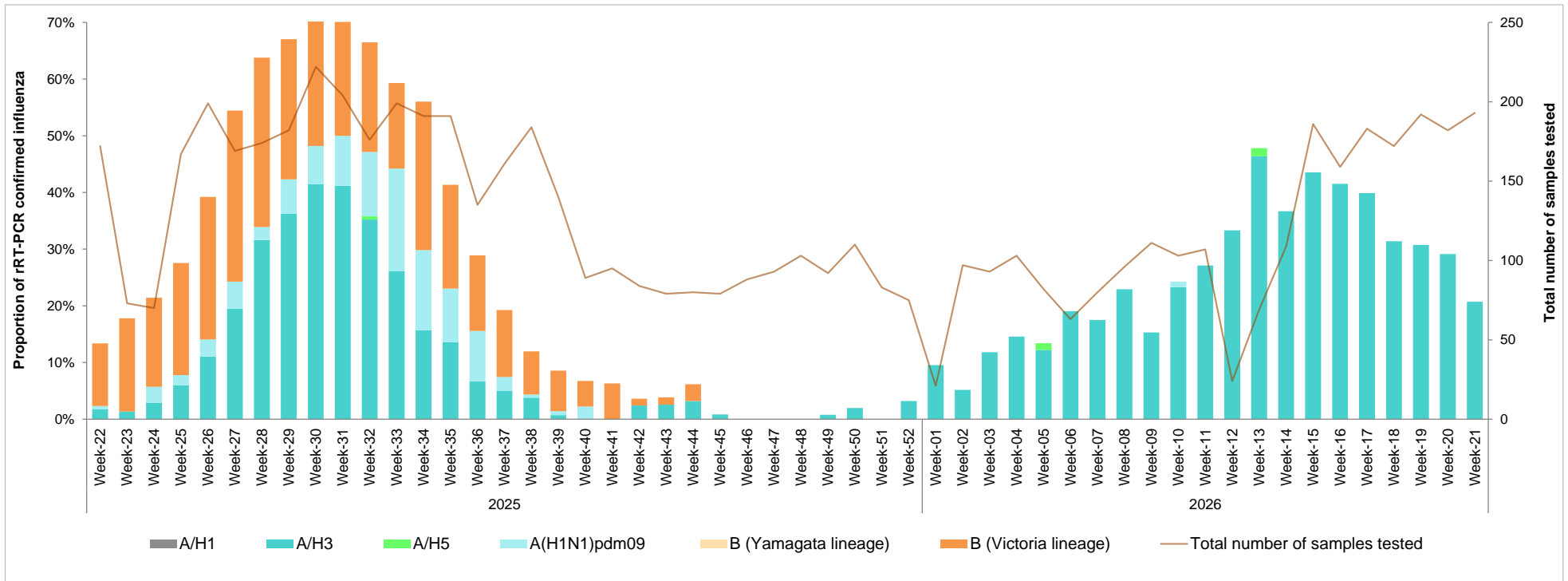
May 2007—May 2026



Hospital based influenza surveillance

Influenza seasonality graph

Week 22 of 2025 to week 21 of 2026



Hospital based influenza surveillance
Hospital-wise SARS-CoV-2 lab results
May 2026

Hospital	District	May 2026			March 2020—May 2026		
		Sample	SARS-CoV-2	SARS-CoV-2 %	Sample	SARS-CoV-2	SARS-CoV-2 %
CuMCH	Cumilla	108	1	1	3,373	142	4
JGH	Jashore	91	0	0	4,379	259	6
JRRMCH	Sylhet	103	1	1	4,425	202	5
CMCH	Chattogram	121	1	1	5,834	300	5
DjMCH	Dinajpur	95	0	0	4,096	168	4
KGH	Dhaka	87	0	0	453	0	0
		605	3	1	22,560	1,071	5

Hospital based influenza surveillance
Influenza and SARS-CoV-2 positivity graph
March 2020—May 2026

