



Monthly summary report

Hospital-Based Human Influenza Surveillance in Bangladesh

February 2026

Hospital based influenza surveillance
Monthly hospital-wise influenza lab results
February 2026

Hospital	District	Sample	Flu	Flu %	Flu A	Flu B	Flu A+B	Flu A/H1	Flu A/H3	Flu A/H5	Flu A/ (H1N1)pdm09	Flu B Yamagata	Flu B Victoria
CuMCH	Cumilla	69	43	62	43	0	0	0	43	0	0	0	0
JGH	Jashore	55	1	2	1	0	0	0	1	0	0	0	0
JRRMCH	Sylhet	52	6	12	6	0	0	0	6	0	0	0	0
CMCH	Chattogram	62	4	6	4	0	0	0	4	0	0	0	0
DjMCH	Dinajpur	54	2	4	2	0	0	0	2	0	0	0	0
KGH	Dhaka	52	9	17	9	0	0	0	9	0	0	0	0
		344	65	19	65	0	0	0	65	0	0	0	0

Hospital based influenza surveillance
Monthly enrollment by different wards (Medicine, Pediatrics and CCU)
February 2026

Hospital	District	Medicine ward			Pediatrics ward (≤12 years of age)			Coronary Care Unit (CCU)		
		Sample	Flu	Flu %	Sample	Flu	Flu %	Sample	Flu	Flu %
CuMCH	Cumilla	38	24	63	29	18	62	2	1	50
JGH	Jashore	27	1	4	28	0	0	0	0	0
JRRMCH	Sylhet	34	5	15	18	1	6	0	0	0
CMCH	Chattogram	31	3	10	31	1	3	0	0	0
DjMCH	Dinajpur	27	0	0	27	2	7	0	0	0
KGH	Dhaka	28	7	25	24	2	8	0	0	0
		185	40	22	157	24	15	2	1	50

Hospital based influenza surveillance
Monthly enrollment by different surveillance groups
February 2026

Hospital	District	SARI (aged ≥ 5 years)			SARI (aged < 5 years)			ILI [‡]		
		Sample	Flu	Flu %	Sample	Flu	Flu %	Sample	Flu	Flu %
CuMCH	Cumilla	22	12	55	7	5	71	40	26	65
JGH	Jashore	7	0	0	8	0	0	40	1	3
JRRMCH	Sylhet	12	3	25	8	0	0	32	3	9
CMCH	Chattogram	14	1	7	8	1	13	40	2	5
DjMCH	Dinajpur	6	0	0	8	0	0	40	2	5
KGH	Dhaka	11	2	18	8	0	0	33	7	21
		72	18	25	47	6	13	225	41	18

Hospital based influenza surveillance
Influenza results by different age groups
February 2026

Age groups	February 2026									Initiation—February 2026								
	SARI (aged ≥ 5 years)			ILI [†]			SARI (aged < 5 years)			SARI (aged ≥ 5 years)			ILI [†]			SARI (aged < 5 years)		
	Sample	Flu	Flu %	Sample	Flu	Flu %	Sample	Flu	Flu %	Sample	Flu	Flu %	Sample	Flu	Flu %	Sample	Flu	Flu %
<1 Year	-	-	-	14	1	7	24	3	13	-	-	-	3,096	208	7	13,085	850	6
1-4 Years	-	-	-	40	6	15	23	3	13	-	-	-	5,569	825	15	6,551	1123	17
5-14 Years	26	5	19	34	7	21	-	-	-	6,455	1443	22	3,914	876	22	-	-	-
15-24 Years	10	2	20	51	11	22	-	-	-	6,232	1447	23	4,241	801	19	-	-	-
25-39 Years	11	5	45	48	13	27	-	-	-	6,517	1285	20	3,404	543	16	-	-	-
40-59 Years	10	2	20	28	3	11	-	-	-	8,168	1327	16	2,313	306	13	-	-	-
≥ 60 Years	15	4	27	10	0	0	-	-	-	8,236	1279	16	775	79	10	-	-	-
	72	18	25	225	41	18	47	6	13	35,608	6,781	19	23,312	3,638	16	19,636	1,973	10

Hospital based influenza surveillance
Hospital-wise influenza lab results
Surveillance initiation—February 2026

Hospital	District	Initiation	Sample	Flu	Flu %	Flu A ^ψ	Flu B ^λ	Flu A+B [‡]	Flu A/H1	Flu A/H3	Flu A/H5	Flu A/H7	Flu A/ (H1N1)pdm09	Flu B Yamagata	Flu B Victoria
DNMCH ^γ	Dhaka	Jun 2007	2,061	312	15	201	111	0	15	84	0	0	102	13	7
CBMCH ^γ	Mymensingh	Oct 2007	2,053	302	15	206	96	0	7	107	1	0	91	16	10
JIMCH [‡]	Kishoregonj	Sep 2007	10,054	1,870	19	1230	639	1	9	714	0	0	505	64	405
RMCH [‡]	Rajshahi	May 2007	6,124	691	11	476	215	0	14	298	0	0	162	39	115
SZRMCH ^γ	Bogura	Sep 2007	3,865	653	17	439	213	1	12	256	0	0	170	29	39
LAMB [†]	Dinajpur	Oct 2007	1,171	112	10	72	40	0	7	41	0	0	24	1	0
BBMH [†]	Chattogram	Aug 2007	1,440	157	11	118	39	0	13	42	0	0	63	3	0
CuMCH [†]	Cumilla	Oct 2007	8,056	1116	14	764	349	3	9	471	1	0	282	28	171
KMCH [‡]	Khulna	Jul 2007	5,141	760	15	543	215	2	16	300	0	0	222	17	137
JGH ^{γ†}	Jashore	Sep 2007	8,009	1692	21	1122	565	5	10	642	2	0	467	26	401
JRRMCH	Sylhet	Jul 2007	7,974	1330	17	872	455	3	16	498	1	0	355	34	278
SBMCH [‡]	Barishal	Aug 2007	8,873	1296	15	854	438	4	7	454	0	0	389	56	233
CMCH	Chattogram	Apr 2014	8,050	1267	16	888	375	4	0	475	1	0	410	41	314
DjMCH	Dinajpur	Apr 2014	5,482	824	15	545	278	1	0	305	0	0	237	28	229
KGH [‡]	Dhaka	Nov 2025	203	10	5	10	0	0	0	10	0	0	0	0	0
			78,556	12,392	16	8,340	4,028	24	135	4,697	6	0	3,479	395	2,339

^λ Influenza B lineages initiated in January 2016

^ψ rRT-PCR result of four samples were equivocal positive for Influenza A.

[‡] Three samples were co-infected with both A(H3) and A(H1N1)pdm09.

^λ Three samples were co-infected with both Influenza B (Yamagata lineage) and Influenza B (Victoria lineage), another ten samples were unsubtypeable.

[‡] Three samples were co-infected with both Influenza A(H1N1)pdm09 and Influenza B (Victoria lineage).

[†] Nine samples were co-infected with both Influenza A(H3) and Influenza B (Victoria lineage).

[†] Surveillance activities ended at LAMB (Dinajpur) and BBMH (Chittagong) in May 2016.

Outpatient ILI surveillance discontinued in October 2017.

^γ Surveillance activities ended at DNMCH (Dhaka), CBMCH (Mymensingh), SZRMCH (Bogra) and JGH (Jessore) in October 2017.

[†] Surveillance activities reinitiated at Cumilla Medical College Hospital (CuMCH), Cumilla in January 2018.

[†] Surveillance activities reinitiated at Jashore 250 bed General Hospital (JGH), Jashore in December 2018.

Note: Surveillance activities extended to the intensive care units (ICU) and coronary care unit (CCU) of the participating hospitals in January 2018.

[¶] Intensive care units (ICU) surveillance discontinued in January 2019.

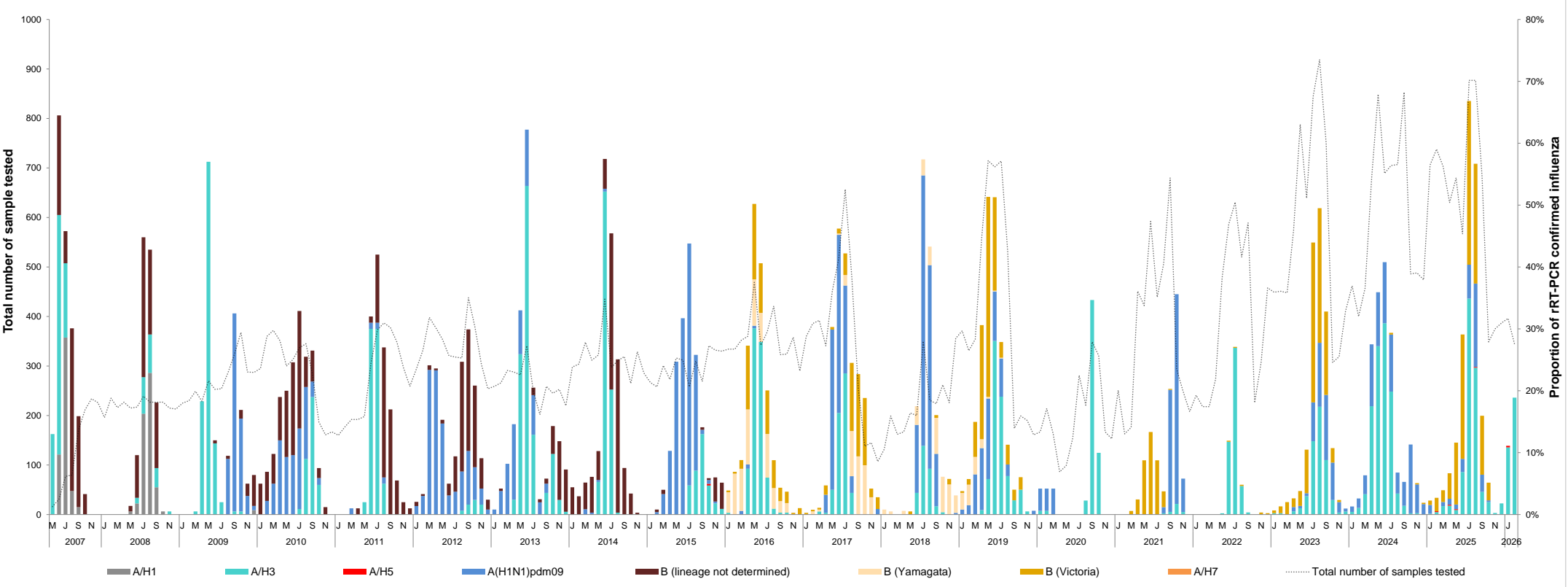
Outpatient ILI surveillance reinitiated at JRRMCH (Sylhet), CMCH (Chattogram) and DjMCH (Dinajpur) in November 2022.

Outpatient ILI surveillance reinitiated at JIMCH (Kishoregonj) and JGH (Jashore) in December 2022.

[‡] Surveillance activities ended at JIMCH (Kishoregonj), RMCH (Rajshahi), KMCH (Khulna) and SBMCH (Barishal) in October 2025.

[‡] Surveillance activities initiated at Kurmitola General Hospital (KGH), Dhaka in November 2025.

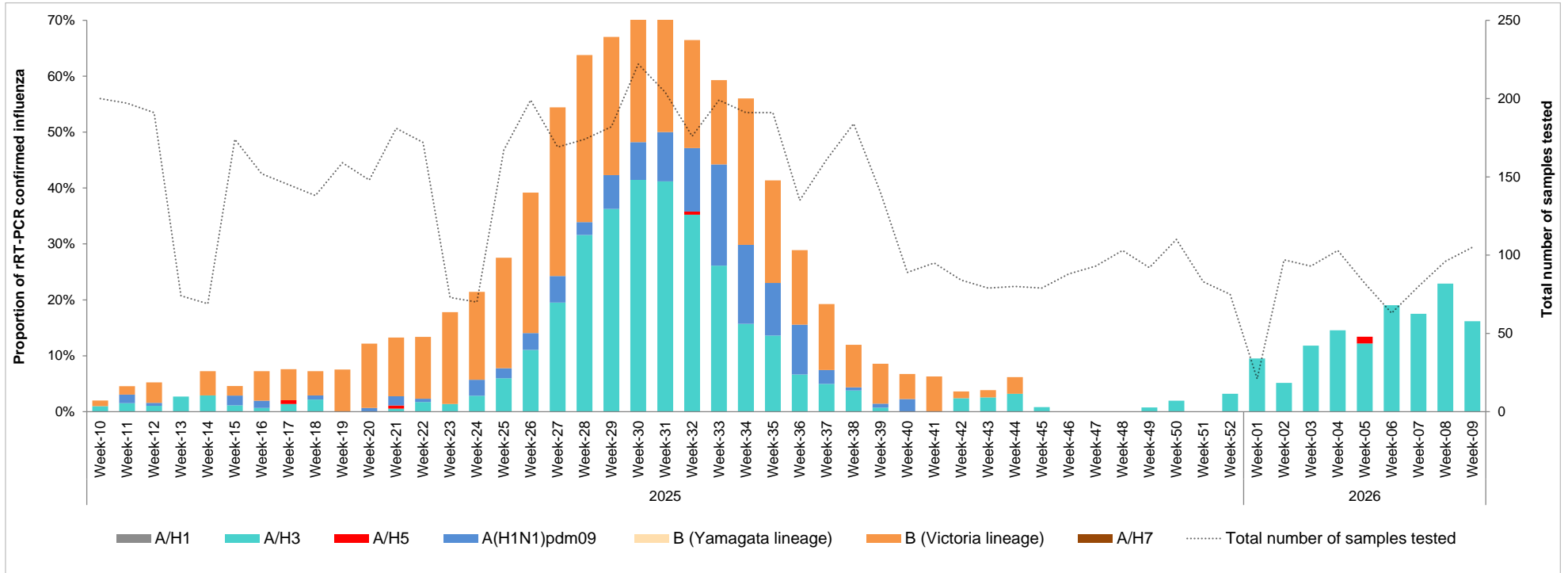
Hospital based influenza surveillance
Influenza seasonality graph
May 2007—February 2026



Hospital based influenza surveillance

Influenza seasonality graph

Week 10 of 2025 to week 09 of 2026



Hospital based influenza surveillance
Hospital-wise SARS-CoV-2 lab results
February 2026

Hospital	District	February 2026			March 2020—February 2026		
		Sample	SARS-CoV-2	SARS-CoV-2 %	Sample	SARS-CoV-2	SARS-CoV-2 %
CuMCH	Cumilla	69	0	0	3,078	141	5
JGH	Jashore	55	0	0	4,125	259	6
JRRMCH	Sylhet	52	0	0	4,141	201	5
CMCH	Chattogram	62	0	0	5,509	299	5
DjMCH	Dinajpur	54	0	0	3,819	168	4
KGH	Dhaka	52	0	0	203	0	0
		344	0	0	20,875	1,068	5

**Hospital based influenza surveillance
Influenza and SARS-CoV-2 positivity graph
March 2020—February 2026**

