



Monthly summary report

Hospital-Based Human Influenza Surveillance in Bangladesh

November 2024

Hospital based influenza surveillance
Monthly hospital-wise influenza lab results
November 2024

Hospital	District	Sample	Flu	Flu %	Flu A	Flu B	Flu A+B	Flu A/H1	Flu A/H3	Flu A/H5	Flu A/H7	Flu A/ (H1N1)pdm09	Flu B Yamagata lineage	Flu B Victoria lineage
JIMCH	Kishoregonj	78	4	5	3	1	0	0	0	0	0	3	0	1
RMCH	Rajshahi	23	1	4	1	0	0	0	0	0	0	1	0	0
CuMCH	Cumilla	25	1	4	1	0	0	0	0	0	0	1	0	0
KMCH	Khulna	20	2	10	2	0	0	0	1	0	0	1	0	0
JGH	Jashore	70	4	6	4	0	0	0	0	0	0	4	0	0
JRRMCH	Sylhet	61	1	2	1	0	0	0	0	0	0	1	0	0
SBMCH	Barishal	28	1	4	1	0	0	0	0	0	0	1	0	0
CMCH	Chattogram	80	5	6	5	0	0	0	0	0	0	5	0	0
MARMCH	Dinajpur	67	4	6	4	0	0	0	0	0	0	4	0	0
		452	23	5	22	1	0	0	1	0	0	21	0	1

Hospital based influenza surveillance
Monthly enrollment by different wards (Medicine, Pediatrics and CCU)
November 2024

Hospital	District	Medicine ward			Pediatrics ward (≤12 years of age)			Coronary Care Unit (CCU)		
		Sample	Flu	Flu %	Sample	Flu	Flu %	Sample	Flu	Flu %
JIMCH	Kishoregonj	47	1	2	28	3	11	3	0	0
RMCH	Rajshahi	14	0	0	9	1	11	0	0	0
CuMCH	Cumilla	15	1	7	10	0	0	0	0	0
KMCH	Khulna	12	2	17	8	0	0	0	0	0
JGH	Jashore	42	3	7	28	1	4	0	0	0
JRRMCH	Sylhet	35	0	0	25	1	4	1	0	0
SBMCH	Barishal	18	0	0	10	1	10	0	0	0
CMCH	Chattogram	46	4	9	34	1	3	0	0	0
MARMCH	Dinajpur	38	2	5	29	2	7	0	0	0
		267	13	5	181	10	6	4	0	0

Hospital based influenza surveillance
Monthly enrollment by different surveillance groups
November 2024

Hospital	District	SARI (aged ≥ 5 years)			SARI (aged < 5 years)			ILI [‡]		
		Sample	Flu	Flu %	Sample	Flu	Flu %	Sample	Flu	Flu %
JIMCH	Kishoregonj	21	1	5	8	0	0	49	3	6
RMCH	Rajshahi	15	1	7	8	0	0	-	-	-
CuMCH	Cumilla	17	1	6	8	0	0	-	-	-
KMCH	Khulna	12	2	17	8	0	0	-	-	-
JGH	Jashore	13	2	15	8	0	0	49	2	4
JRRMCH	Sylhet	15	0	0	8	1	13	38	0	0
SBMCH	Barishal	20	0	0	8	1	13	-	-	-
CMCH	Chattogram	22	1	5	8	0	0	50	4	8
MARMCH	Dinajpur	11	2	18	8	0	0	48	2	4
		146	10	7	72	2	3	234	11	5

Hospital based influenza surveillance
Influenza results by different age groups
November 2024

Age groups	November 2024									Initiation—November 2024								
	SARI (aged ≥ 5 years)			ILI [‡]			SARI (aged < 5 years)			SARI (aged ≥ 5 years)			ILI [‡]			SARI (aged < 5 years)		
	Sample	Flu	Flu %	Sample	Flu	Flu %	Sample	Flu	Flu %	Sample	Flu	Flu %	Sample	Flu	Flu %	Sample	Flu	Flu %
<1 Year	-	-	-	8	0	0	41	1	2	-	-	-	2,942	196	7	11,864	730	6
1-4 Years	-	-	-	22	3	14	31	1	3	-	-	-	5,002	728	15	5,453	829	15
5-14 Years	35	5	14	56	2	4	-	-	-	5,711	1221	21	3,290	745	23	-	-	-
15-24 Years	26	2	8	62	2	3	-	-	-	5,725	1309	23	3,383	641	19	-	-	-
25-39 Years	29	1	3	43	1	2	-	-	-	5,971	1159	19	2,743	440	16	-	-	-
40-59 Years	33	1	3	34	2	6	-	-	-	7,580	1212	16	1,853	265	14	-	-	-
≥ 60 Years	23	1	4	9	1	11	-	-	-	7,646	1190	16	628	70	11	-	-	-
	146	10	7	234	11	5	72	2	3	32,633	6,091	19	19,841	3,085	16	17,317	1,559	9

[‡]Outpatient ILI surveillance reinitiated at JIMCH (Kishoregonj), JGH (Jashore), JRRMCH (Sylhet), CMCH (Chattogram) and MARMCH (Dinajpur) in November 2023.

Hospital based influenza surveillance
Hospital-wise influenza lab results
Surveillance initiation—November 2024

Hospital	District	Initiation	Sample	Flu	Flu %	Flu A ^ψ	Flu B ^λ	Flu A+B [‡]	Flu A/H1	Flu A/H3	Flu A/H5	Flu A/H7	Flu A/ (H1N1)pdm09	Flu B Yamagata lineage	Flu B Victoria lineage
DNMCH ^γ	Dhaka	Jun 2007	2,061	312	15	201	111	0	15	84	0	0	102	13	7
CBMCH ^γ	Mymensingh	Oct 2007	2,053	302	15	206	96	0	7	107	1	0	91	16	10
JIMCH	Kishoregonj	Sep 2007	8,952	1,593	18	1084	508	1	9	594	0	0	479	64	274
RMCH	Rajshahi	May 2007	5,644	639	11	445	194	0	14	272	0	0	157	39	94
SZRMCH ^γ	Bogura	Sep 2007	3,865	653	17	439	213	1	12	256	0	0	170	29	39
LAMB [†]	Dinajpur	Oct 2007	1,171	112	10	72	40	0	7	41	0	0	24	1	0
BBMH [†]	Chattogram	Aug 2007	1,440	157	11	118	39	0	13	42	0	0	63	3	0
CuMCH [‡]	Cumilla	Oct 2007	7,171	883	12	610	270	3	9	326	0	0	274	28	92
KMCH	Khulna	Jul 2007	4,802	679	14	488	190	1	16	266	0	0	201	17	112
JGH ^{γ†}	Jashore	Sep 2007	6,830	1422	21	970	449	3	10	541	0	0	419	26	285
JRRMCH	Sylhet	Jul 2007	6,686	1079	16	731	346	2	16	383	0	0	331	34	169
SBMCH	Barishal	Aug 2007	8,263	1168	14	793	371	4	7	411	0	0	371	56	166
CMCH	Chattogram	Apr 2014	6,512	1056	16	779	273	4	0	395	0	0	383	41	212
MARMCH [‡]	Dinajpur	Apr 2014	4,341	680	16	458	222	0	0	268	0	0	187	28	173
			69,791	10,735	15	7,394	3,322	19	135	3,986	1	0	3,252	395	1,633

^ψrRT-PCR result of four samples were equivocal positive for Influenza A.

^γThree samples were co-infected with both A(H3) and A(H1N1)pdm09.

^λThree samples were co-infected with both Influenza B (Yamagata lineage) and Influenza B (Victoria lineage), another ten samples were unsubtypeable.

[‡]Three samples were co-infected with both Influenza A(H1N1)pdm09 and Influenza B (Victoria lineage).

[†]Nine samples were co-infected with both Influenza A(H3) and Influenza B (Victoria lineage).

[†]Surveillance activities ended at LAMB (Dinajpur) and BBMH (Chittagong) in May 2016.

Outpatient ILI surveillance discontinued in October 2017.

^γSurveillance activities ended at DNMCH (Dhaka), CBMCH (Mymensingh), SZRMCH (Bogra) and JGH (Jessore) in October 2017.

[‡]Surveillance activities reinitiated at Cumilla Medical College Hospital (CuMCH), Cumilla in January 2018.

[†]Surveillance activities reinitiated at Jashore 250 bed General Hospital (JGH), Jashore in December 2018.

[‡]Dinajpur Medical College Hospital (DJMCH) has been renamed as M Abdur Rahim Medical College Hospital (MARMCH).

Note: Surveillance activities extended to the intensive care units (ICU) and coronary care unit (CCU) of the participating hospitals in January 2018.

^φ Intensive care units (ICU) surveillance discontinued in January 2019.

*One sample from CuMCH (Cumilla) and two samples from KMCH (Khulna) collected in November 2019 were not true positive for influenza A and were considered as inconclusive result. The result will be confirmed with further test through viral culture.

[†]Nine samples (one each from JIMCH, JRRMCH and MARMCH and two each from RMCH, KMCH and SBMCH) collected in December 2019 were not true positive for influenza A and were considered as inconclusive result. The result will be confirmed with further test through viral culture.

Outpatient ILI surveillance reinitiated at JRRMCH (Sylhet), CMCH (Chattogram) and MARMCH (Dinajpur) in November 2022.

Outpatient ILI surveillance reinitiated at JIMCH (Kishoregonj) and JGH (Jashore) in December 2022.

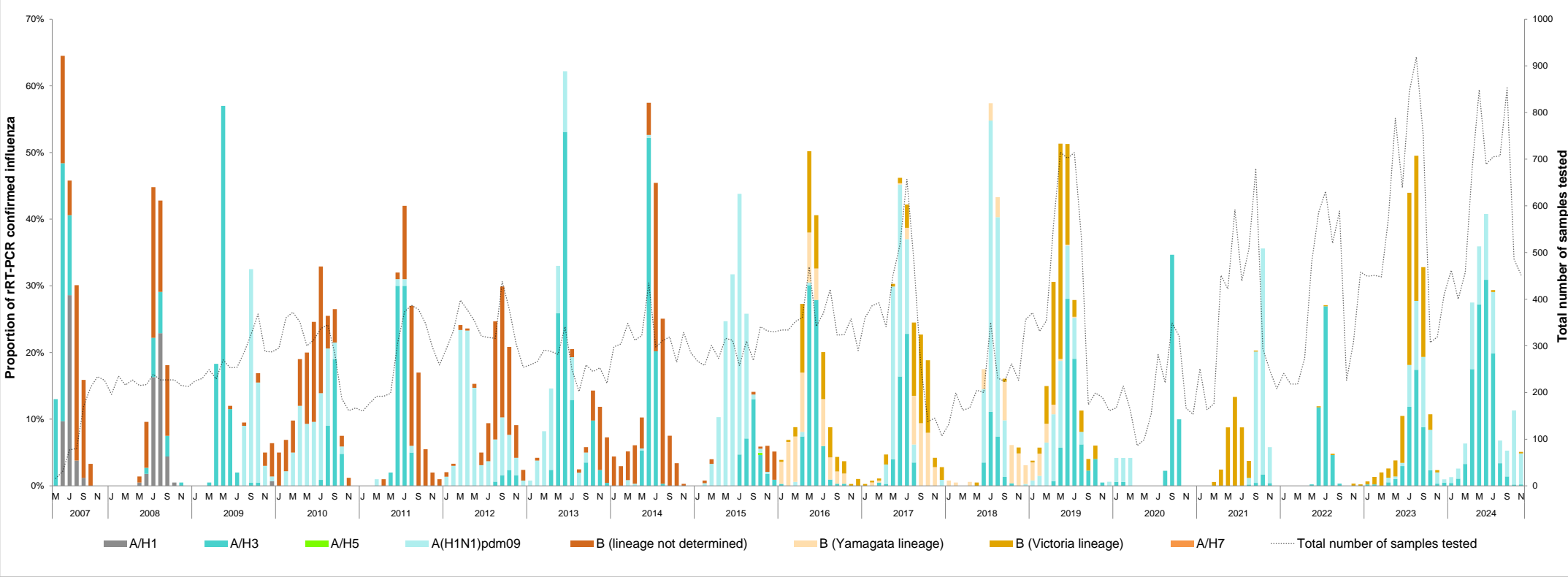
Outpatient ILI surveillance discontinued in October 2023.

Outpatient ILI surveillance reinitiated at JIMCH (Kishoregonj), JGH (Jashore), JRRMCH (Sylhet), CMCH (Chattogram) and MARMCH (Dinajpur) in November 2023.

Hospital based influenza surveillance

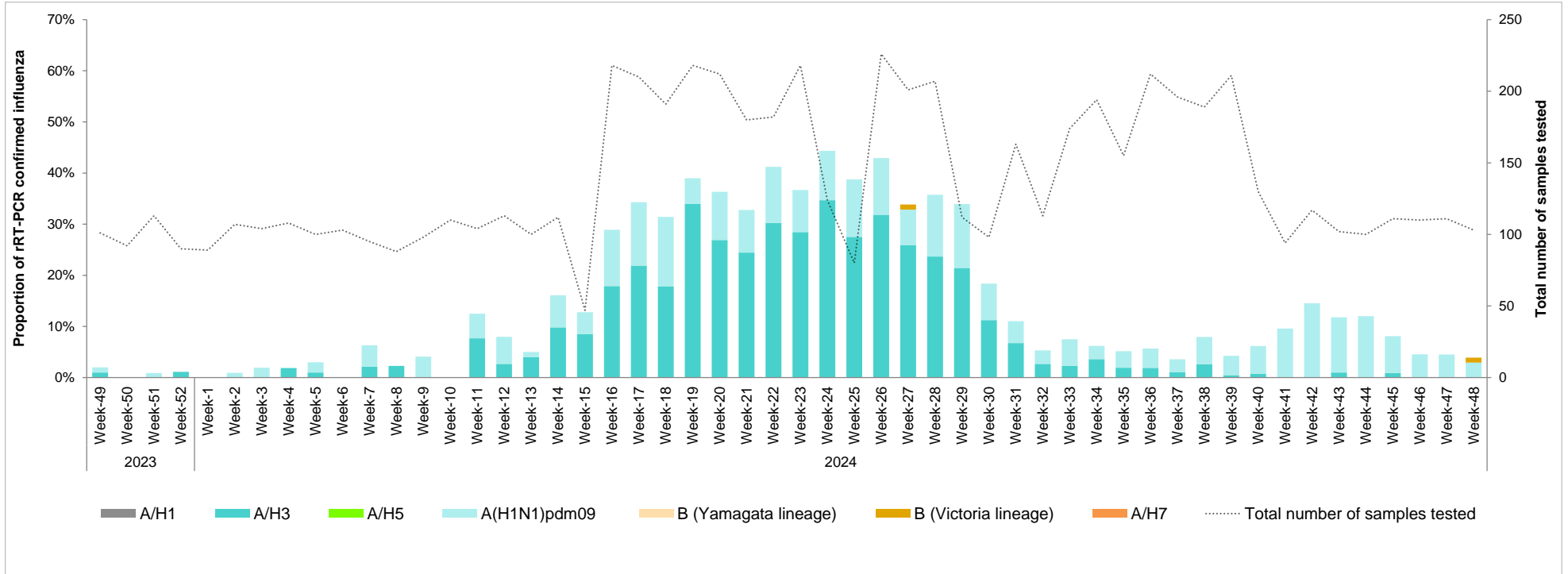
Influenza seasonality graph

May 2007—November 2024



Note: Influenza B lineages initiated in January 2016

Hospital based influenza surveillance
Influenza seasonality graph
Week 49 of 2023 to week 48 of 2024



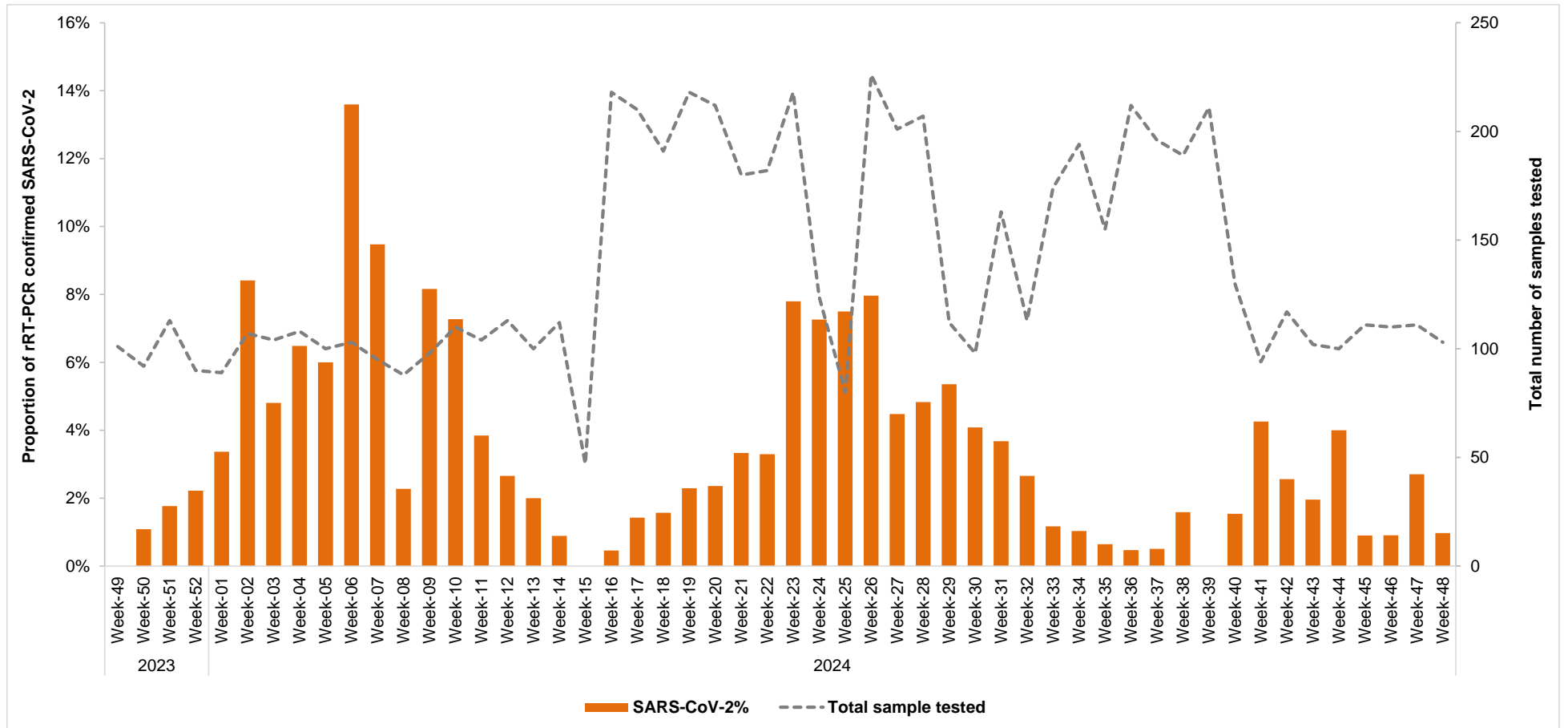
Hospital based influenza surveillance
Hospital-wise SARS-CoV-2 lab results
November 2024

Hospital	District	November 2024			March 2020—November 2024		
		Sample	SARS-CoV-2	SARS-CoV-2 %	Sample	SARS-CoV-2	SARS-CoV-2 %
JIMCH	Kishoregonj	78	3	4	3,559	172	5
RMCH	Rajshahi	23	0	0	2,177	149	7
CuMCH	Cumilla	25	0	0	2,193	137	6
KMCH	Khulna	20	0	0	1,823	219	12
JGH	Jashore	70	1	1	2,946	228	8
JRRMCH	Sylhet	61	0	0	2,853	193	7
SBMCH	Barishal	28	2	7	2,656	185	7
CMCH	Chattogram	80	0	0	3,971	285	7
MARMCH	Dinajpur	67	1	1	2,678	153	6
		452	7	2	24,856	1,721	7

**Hospital based influenza surveillance
SARS-CoV-2 results by different age groups
November 2024**

Age groups	November 2024			March 2020—November 2024		
	Sample	SARS-CoV-2	SARS-CoV-2 %	Sample	SARS-CoV-2	SARS-CoV-2 %
<1 Year	49	0	0	5504	183	3
1-4 Years	53	1	2	3798	50	1
5-14 Years	91	1	1	3,281	70	2
15-24 Years	88	0	0	2,860	150	5
25-39 Years	72	3	4	2,816	309	11
40-59 Years	67	0	0	3,526	513	15
≥ 60 Years	32	2	6	3,071	446	15
	452	7	2	24,856	1,721	7

**Hospital based influenza surveillance
SARS-CoV-2 positivity trend by week
Week 49 of 2023 to week 48 of 2024**



**Hospital based influenza surveillance
Influenza and SARS-CoV-2 positivity graph
March 2020—November 2024**

