



Monthly summary report

Hospital Based Human Influenza Surveillance in Bangladesh

February 2023

Hospital based influenza surveillance
Monthly enrollment by different wards (Medicine, Pediatrics and CCU)
February 2023

Hospital	District	Medicine ward			Pediatrics ward (≤ 12 years of age)			Coronary Care Unit (CCU)		
		Sample	Flu	Flu %	Sample	Flu	Flu %	Sample	Flu	Flu %
JIMCH	Kishoregonj	42	0	0	33	0	0	6	0	0
RMCH	Rajshahi	16	0	0	8	0	0	0	0	0
CuMCH	Cumilla	13	0	0	16	1	6	2	0	0
KMCH	Khulna	10	0	0	9	0	0	0	0	0
JGH	Jashore	37	1	3	27	0	0	0	0	0
JRRMCH	Sylhet	30	2	7	32	1	3	0	0	0
SBMCH	Barishal	14	0	0	17	0	0	2	0	0
CMCH	Chattogram	48	0	0	30	0	0	0	0	0
MARMCH	Dinajpur	32	1	3	32	0	0	1	0	0
		242	4	1.7	204	2	1	11	0	0

Hospital based influenza surveillance
Monthly hospitalwise influenza lab results
February 2023

Hospital	District	Sample	Flu	Flu %	Flu A	Flu B	Flu A+B	Flu A/H1	Flu A/H3	Flu A/H5	Flu A/H7	Flu A/ (H1N1)pdm09	Flu B Yamagata lineage	Flu B Victoria lineage
JIMCH	Kishoregonj	81	0	0	0	0	0	0	0	0	0	0	0	0
RMCH	Rajshahi	24	0	0	0	0	0	0	0	0	0	0	0	0
CuMCH	Cumilla	31	1	3	0	1	0	0	0	0	0	0	0	1
KMCH	Khulna	19	0	0	0	0	0	0	0	0	0	0	0	0
JGH	Jashore	64	1	2	1	0	0	0	0	0	0	1	0	0
JRRMCH	Sylhet	62	3	5	0	3	0	0	0	0	0	0	0	3
SBMCH	Barishal	33	0	0	0	0	0	0	0	0	0	0	0	0
CMCH	Chattogram	78	0	0	0	0	0	0	0	0	0	0	0	0
MARMCH	Dinajpur	65	1	2	0	1	0	0	0	0	0	0	0	1
		457	6	1.3	1	5	0	0	0	0	0	1	0	5

Hospital based influenza surveillance
Monthly enrollment by different surveillance groups
February 2023

Hospital	District	SARI (aged ≥ 5 years)			SARI (aged < 5 years)			ILI [‡]		
		Sample	Flu	Flu %	Sample	Flu	Flu %	Sample	Flu	Flu %
JIMCH	Kishoregonj	29	0	0	8	0	0	44	0	0
RMCH	Rajshahi	16	0	0	8	0	0	-	-	-
CuMCH	Cumilla	24	0	0	7	1	14	-	-	-
KMCH	Khulna	10	0	0	9	0	0	-	-	-
JGH	Jashore	9	0	0	9	0	0	46	1	2
JRRMCH	Sylhet	13	0	0	9	0	0	40	3	8
SBMCH	Barishal	25	0	0	8	0	0	-	-	-
CMCH	Chattogram	26	0	0	6	0	0	46	0	0
MARMCH	Dinajpur	12	0	0	11	0	0	42	1	2
		164	0	0	75	1	1.3	218	5	2.3

[‡]Outpatient ILI surveillance reinitiated at JRRMCH (Sylhet), CMCH (Chattogram) and MARMCH (Dinajpur) in November 2022 and JIMCH (Kishoregonj) and JGH (Jashore) in December 2022.

**Hospital based influenza surveillance
Influenza results by different age groups
February 2023**

Age groups	February 2023									Initiation - February 2023								
	SARI (aged ≥ 5 years)			ILI [‡]			SARI (aged < 5 years)			SARI (aged ≥ 5 years)			ILI [‡]			SARI (aged < 5 years)		
	Sample	Flu	Flu %	Sample	Flu	Flu %	Sample	Flu	Flu %	Sample	Flu	Flu %	Sample	Flu	Flu %	Sample	Flu	Flu %
<1 Year	-	-	-	8	1	13	60	0	0	-	-	-	2,732	190	7	9,592	505	5
1-4 Years	-	-	-	42	0	0	15	1	7	-	-	-	4,368	601	14	3,995	510	13
5-14 Years	45	0	0	48	1	2	-	-	-	4,514	907	20	2,454	549	22	-	-	-
15-24 Years	17	0	0	46	1	2	-	-	-	4,789	1,071	22	2,298	415	18	-	-	-
25-39 Years	21	0	0	38	2	5	-	-	-	5,159	957	19	2,027	301	15	-	-	-
40-59 Years	41	0	0	23	0	0	-	-	-	6,562	1,016	15	1,333	201	15	-	-	-
≥ 60 Years	40	0	0	13	0	0	-	-	-	6,746	1,020	15	444	46	10	-	-	-
	164	0	0	218	5	2.3	75	1	1.3	27,770	4,971	18	15,656	2,303	15	13,587	1,015	7

[‡] Outpatient ILI surveillance reinitiated at JRRMCH (Sylhet), CMCH (Chattogram) and MARMCH (Dinajpur) in November 2022 and JIMCH (Kishoregonj) and JGH (Jashore) in December 2022.

Hospital based influenza surveillance
Hospitalwise influenza lab results
Surveillance initiation - February 2023

Hospital	District	Initiation	Sample	Flu	Flu %	Flu A ^ψ	Flu B ^λ	Flu A+B [‡]	Flu A/H1	Flu A/H3	Flu A/H5	Flu A/H7	Flu A/ (H1N1)pdm09	Flu B Yamagata lineage	Flu B Victoria lineage
DNMCH ^γ	Dhaka	Jun 2007	2,061	312	15	201	111	0	15	84	0	0	102	13	7
CBMCH ^γ	Mymensingh	Oct 2007	2,053	302	15	206	96	0	7	107	1	0	91	16	10
JIMCH	Kishoregonj	Sep 2007	6,947	1,226	18	831 [†]	395	0	9	444	0	0	376	64	161
RMCH	Rajshahi	May 2007	4,775	540	11	362 [†]	178	0	14	207	0	0	139	39	78
SZRMCH ^γ	Bogura	Sep 2007	3,865	653	17	439	213	1	12	256	0	0	170	29	39
LAMB [†]	Dinajpur	Oct 2007	1,171	112	10	72	40	0	7	41	0	0	24	1	0
BBMH [†]	Chattogram	Aug 2007	1,440	157	11	118	39	0	13	42	0	0	63	3	0
CuMCH [‡]	Cumilla	Oct 2007	6,216	725	12	489 [*]	233	3	9	257	0	0	222	28	55
KMCH	Khulna	Jul 2007	4,076	518	13	371 ^{*†}	147	0	16	188	0	0	163	17	69
JGH [‡]	Jashore	Sep 2007	5,080	938	18	606	331	1	10	322	0	0	274	26	167
JRRMCH	Sylhet	Jul 2007	5,099	773	15	498 [†]	274	1	16	254	0	0	227	34	97
SBMCH	Barishal	Aug 2007	7,103	974	14	636 [†]	334	4	9	312	0	0	313	56	129
CMCH	Chattogram	Apr 2014	4,309	650	15	466	181	3	0	198	0	0	268	41	120
MARMCH [‡]	Dinajpur	Apr 2014	2,818	409	15	270 [†]	139	0	0	145	0	0	122	28	90
			57,013	8,289	15	5,565	2,711	13	137	2,857	1	0	2,554	395	1,022

^λInfluenza B typing initiated in January 2016.

^ψrRT-PCR result of four samples were equivocal positive for Influenza A.

^ψOne sample collected in June 2013 and another sample collected in June 2017 were co-infected with both A(H3) and A(H1N1)pdm09.

^λThree samples were co-infected with both Influenza B (Yamagata lineage) and Influenza B (Victoria lineage), another ten samples were unsubtypeable.

[‡]Three samples were co-infected with both Influenza A(H1N1)pdm09 and Influenza B (Victoria lineage).

[†]One sample collected in May 2019 was co-infected with both Influenza A(H3) and Influenza B (Victoria lineage).

[†]Surveillance activities ended at LAMB (Dinajpur) and BBMH (Chittagong) in May 2016.

^γSurveillance activities ended at DNMCH (Dhaka), CBMCH (Mymensingh), SZRMCH (Bogra) and JGH (Jessore) in October 2017.

[‡]Surveillance activities reinitiated at Cumilla Medical College Hospital (CuMCH), Cumilla in January 2018.

[‡]Surveillance activities reinitiated at Jashore 250 bed General Hospital (JGH), Jashore in December 2018.

[‡]Dinajpur Medical College Hospital (DjMCH) has been renamed as M Abdur Rahim Medical College Hospital (MARMCH).

Note: Surveillance activities extended to the intensive care units (ICU) and coronary care unit (CCU) of the participating hospitals in January 2018.

^φ Intensive care units (ICU) surveillance discontinued in January 2019.

^{*}One sample from CuMCH (Cumilla) and two samples from KMCH (Khulna) collected in November 2019 were not true positive for influenza A and were considered as inconclusive result. The result will be confirmed with further test through viral culture.

[†]Nine samples (one each from JIMCH, JRRMCH and MARMCH and two each from RMCH, KMCH and SBMCH) collected in December 2019 were not true positive for influenza A and were considered as inconclusive result. The result will be confirmed with further test through viral culture.

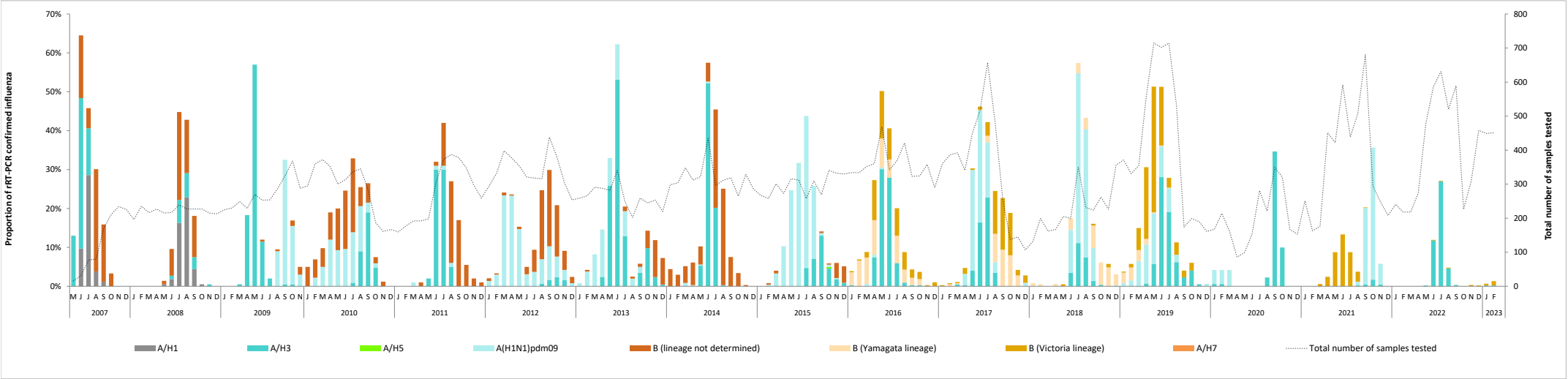
Outpatient ILI surveillance reinitiated at JRRMCH (Sylhet), CMCH (Chattogram) and MARMCH (Dinajpur) in November 2022.

Outpatient ILI surveillance reinitiated at JIMCH (Kishoregonj) and JGH (Jashore) in December 2022.

Hospital based influenza surveillance

Influenza seasonality graph

May 2007 - February 2023



Note: Influenza B typing initiated in January 2016

