



Monthly summary report

Hospital Based Human Influenza Surveillance in Bangladesh

November 2021

Hospital based influenza surveillance
Monthly enrollment by different wards (Medicine, Pediatrics and CCU)
November 2021

Hospital	District	Medicine ward			Pediatrics ward (≤12 years of age)			Coronary Care Unit (CCU)		
		Sample	Flu	Flu %	Sample	Flu	Flu %	Sample	Flu	Flu %
JIMCH	Kishoregonj	10	0	0	14	0	0	7	1	14
RMCH	Rajshahi	15	0	0	13	1	8	1	0	0
CuMCH	Cumilla	14	1	7	13	0	0	1	0	0
KMCH	Khulna	12	0	0	10	0	0	2	0	0
JGH	Jashore	8	0	0	13	0	0	0	0	0
JRRMCH	Sylhet	7	1	14	11	3	27	4	0	0
SBMCH	Barishal	12	2	17	17	0	0	1	0	0
CMCH	Chattogram	17	2	12	16	3	19	3	0	0
MARMCH	Dinajpur	7	0	0	13	0	0	0	0	0
		102	6	6	120	7	6	19	1	5

Hospital based influenza surveillance
Monthly hospitalwise influenza lab results
November 2021

Hospital	District	Sample	Flu	Flu %	Flu A	Flu B	Flu A+B	Flu A/H1	Flu A/H3	Flu A/H5	Flu A/H7	Flu A/ (H1N1)pdm09	Flu B Yamagata lineage	Flu B Victoria lineage
JIMCH	Kishoregonj	31	1	3	1	0	0	0	0	0	0	1	0	0
RMCH	Rajshahi	29	1	3	1	0	0	0	0	0	0	1	0	0
CuMCH	Cumilla	28	1	4	1	0	0	0	0	0	0	1	0	0
KMCH	Khulna	24	0	0	0	0	0	0	0	0	0	0	0	0
JGH	Jashore	21	0	0	0	0	0	0	0	0	0	0	0	0
JRRMCH	Sylhet	22	4	18	4	0	0	0	0	0	0	4	0	0
SBMCH	Barishal	30	2	7	2	0	0	0	1	0	0	1	0	0
CMCH	Chattogram	36	5	14	5	0	0	0	0	0	0	5	0	0
MARMCH	Dinajpur	20	0	0	0	0	0	0	0	0	0	0	0	0
		241	14	6	14	0	0	0	1	0	0	13	0	0

Hospital based influenza surveillance
Monthly enrollment by different surveillance groups
November 2021

Hospital	District	SARI (aged ≥ 5 years)			SARI (aged < 5 years)		
		Sample	Flu	Flu %	Sample	Flu	Flu %
JIMCH	Kishoregonj	20	1	5	11	0	0
RMCH	Rajshahi	17	0	0	12	1	8
CuMCH	Cumilla	19	1	5	9	0	0
KMCH	Khulna	14	0	0	10	0	0
JGH	Jashore	12	0	0	9	0	0
JRRMCH	Sylhet	14	2	14	8	2	25
SBMCH	Barishal	21	2	10	9	0	0
CMCH	Chattogram	27	3	11	9	2	22
MARMCH	Dinajpur	11	0	0	9	0	0
		155	9	6	86	5	6

**Hospital based influenza surveillance
Influenza results by different age groups
November 2021**

Age groups	November 2021						Initiation - November 2021								
	SARI (aged ≥ 5 years)			SARI (aged < 5 years)			SARI (aged ≥ 5 years)			ILI [‡]			SARI (aged < 5 years)		
	Sample	Flu	Flu %	Sample	Flu	Flu %	Sample	Flu	Flu %	Sample	Flu	Flu %	Sample	Flu	Flu %
<1 Year	-	-	-	60	3	5	-	-	-	2665	189	7	8,159	484	6
1-4 Years	-	-	-	26	2	8	-	-	-	4217	601	14	3,145	465	15
5-14 Years	38	2	5	-	-	-	3852	880	23	2317	547	24	-	-	-
15-24 Years	12	0	0	-	-	-	4391	1022	23	2167	413	19	-	-	-
25-39 Years	28	4	14	-	-	-	4750	924	19	1916	299	16	-	-	-
40-59 Years	34	1	3	-	-	-	5967	976	16	1245	201	16	-	-	-
≥ 60 Years	43	2	5	-	-	-	5954	962	16	400	46	12	-	-	-
	155	9	6	86	5	6	24,914	4,764	19	14,927	2,296	15	11,304	949	8

[‡]Outpatient ILI surveillance discontinued in October 2017.

Hospital based influenza surveillance
Hospitalwise influenza lab results
Surveillance initiation - November 2021

Hospital	District	Initiation	Sample	Flu	Flu %	Flu A ^ψ	Flu B ^λ	Flu A+B [‡]	Flu A/H1	Flu A/H3	Flu A/H5	Flu A/H7	Flu A/ (H1N1)pdm09	Flu B Yamagata lineage	Flu B Victoria lineage
DNMCH ^γ	Dhaka	Jun 2007	2061	312	15	201	111	0	15	84	0	0	102	13	7
CBMCH ^γ	Mymensingh	Oct 2007	2053	302	15	206	96	0	7	107	1	0	91	16	10
JIMCH	Kishoregonj	Sep 2007	6181	1188	19	795 [†]	393	0	9	408	0	0	376	64	159
RMCH	Rajshahi	May 2007	4229	527	12	349 [†]	178	0	14	194	0	0	139	39	78
SZRMCH ^γ	Bogura	Sep 2007	3865	653	17	439	213	1	12	256	0	0	170	29	39
LAMB [†]	Dinajpur	Oct 2007	1171	112	10	72	40	0	7	41	0	0	24	1	0
BBMH [†]	Chattogram	Aug 2007	1440	157	11	118	39	0	13	42	0	0	63	3	0
CuMCH [‡]	Cumilla	Oct 2007	5616	693	12	461 [*]	229	3	9	229	0	0	222	28	51
KMCH	Khulna	Jul 2007	3604	496	14	349 ^{*†}	147	0	16	166	0	0	163	17	69
JGH ^{γ†}	Jashore	Sep 2007	4433	890	20	558	331	1	10	275	0	0	273	26	167
JRRMCH	Sylhet	Jul 2007	4461	737	17	466 [†]	270	1	16	222	0	0	227	34	93
SBMCH	Barishal	Aug 2007	6421	957	15	619 [†]	334	4	9	295	0	0	313	56	129
CMCH	Chattogram	Apr 2014	3442	600	17	417	180	3	0	149	0	0	268	41	119
MARMCH [‡]	Dinajpur	Apr 2014	2168	385	18	247 [†]	138	0	0	122	0	0	122	28	89
			51,145	8,009	16	5,297	2,699	13	137	2,590	1	0	2,553	395	1,010

^λInfluenza B typing initiated in January 2016.

^ψrRT-PCR result of four samples were equivocal positive for Influenza A.

^ψOne sample collected in June 2013 and another sample collected in June 2017 were co-infected with both A(H3) and A(H1N1)pdm09.

^λThree samples were co-infected with both Influenza B (Yamagata lineage) and Influenza B (Victoria lineage), another ten samples were unsubtypeable.

[‡]Three samples were co-infected with both Influenza A(H1N1)pdm09 and Influenza B (Victoria lineage).

[†]One sample collected in May 2019 was co-infected with both Influenza A(H3) and Influenza B (Victoria lineage).

[†]Surveillance activities ended at LAMB (Dinajpur) and BBMH (Chittagong) in May 2016.

^γSurveillance activities ended at DNMCH (Dhaka), CBMCH (Mymensingh), SZRMCH (Bogra) and JGH (Jessore) in October 2017.

[‡]Surveillance activities reinitiated at Cumilla Medical College Hospital (CuMCH), Cumilla in January 2018.

[†]Surveillance activities reinitiated at Jashore 250 bed General Hospital (JGH), Jashore in December 2018.

[‡]Dinajpur Medical College Hospital (DjMCH) has been renamed as M Abdur Rahim Medical College Hospital (MARMCH).

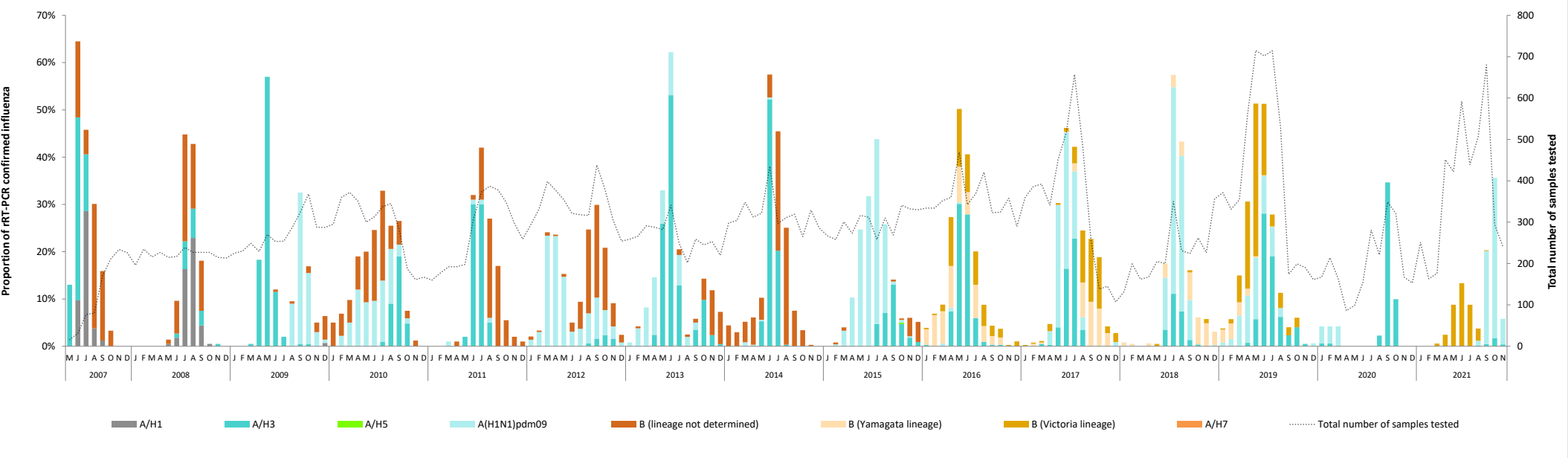
Note: Surveillance activities extended to the intensive care units (ICU) and coronary care unit (CCU) of the participating hospitals in January 2018.

^φ Intensive care units (ICU) surveillance discontinued in January 2019.

^{*}One sample from CuMCH (Cumilla) and two samples from KMCH (Khulna) collected in November 2019 were not true positive for influenza A and were considered as inconclusive result. The result will be confirmed with further test through viral culture.

[†]Nine samples (one each from JIMCH, JRRMCH and MARMCH and two each from RMCH, KMCH and SBMCH) collected in December 2019 were not true positive for influenza A and were considered as inconclusive result. The result will be confirmed with further test through viral culture.

Hospital based influenza surveillance
Influenza seasonality graph
May 2007 - November 2021



Note: Influenza B typing initiated in January 2016

Hospital based influenza surveillance
Influenza seasonality graph
Week 48 of 2020 to week 47 of 2021

